



Contents

the Aloha Hill Magazine

< a new concept in quality living >

06

A Brief History of the Aloha Hill Club

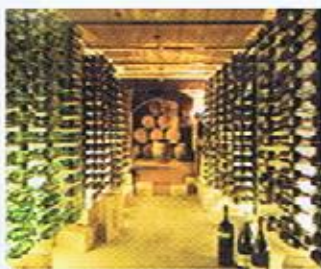
< world class luxury serviced development >



12

Excellence in a bottle - The Bodega at the Aloha Hill Club

< Access to 1000s of premier wines >



18

Busy doing nothing at the Aloha Hill Club

< the perfect lifestyle >



24

Golf all around:

< Nueva Andalucia's Golf Valley >



10

Taking Property to the next level

< welcome to Aloha Hill Club >



14

Concierge service

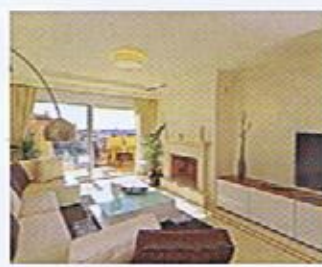
< with style >



20

Interior Direct Scandinavian Design

< with a universal appeal >



26

Ismael Mérida: creator of the Aloha Hill Club

< architectural harmony >



The Aloha Hill Club Magazine is published by Siesta Real Estate, a division of Siesta Homes Group.

Design: Recline Company

Photos: David Toms, Daniel Posner, Shutterstock, Photospin.

Siesta Real Estate is a division of the larger Siesta Homes Group which possesses a wealth of knowledge in real estate, property development & property investment.

Within the entire group we provide additional expertise and services in rental & property management,

hotel & resort management, project management & property reformation.

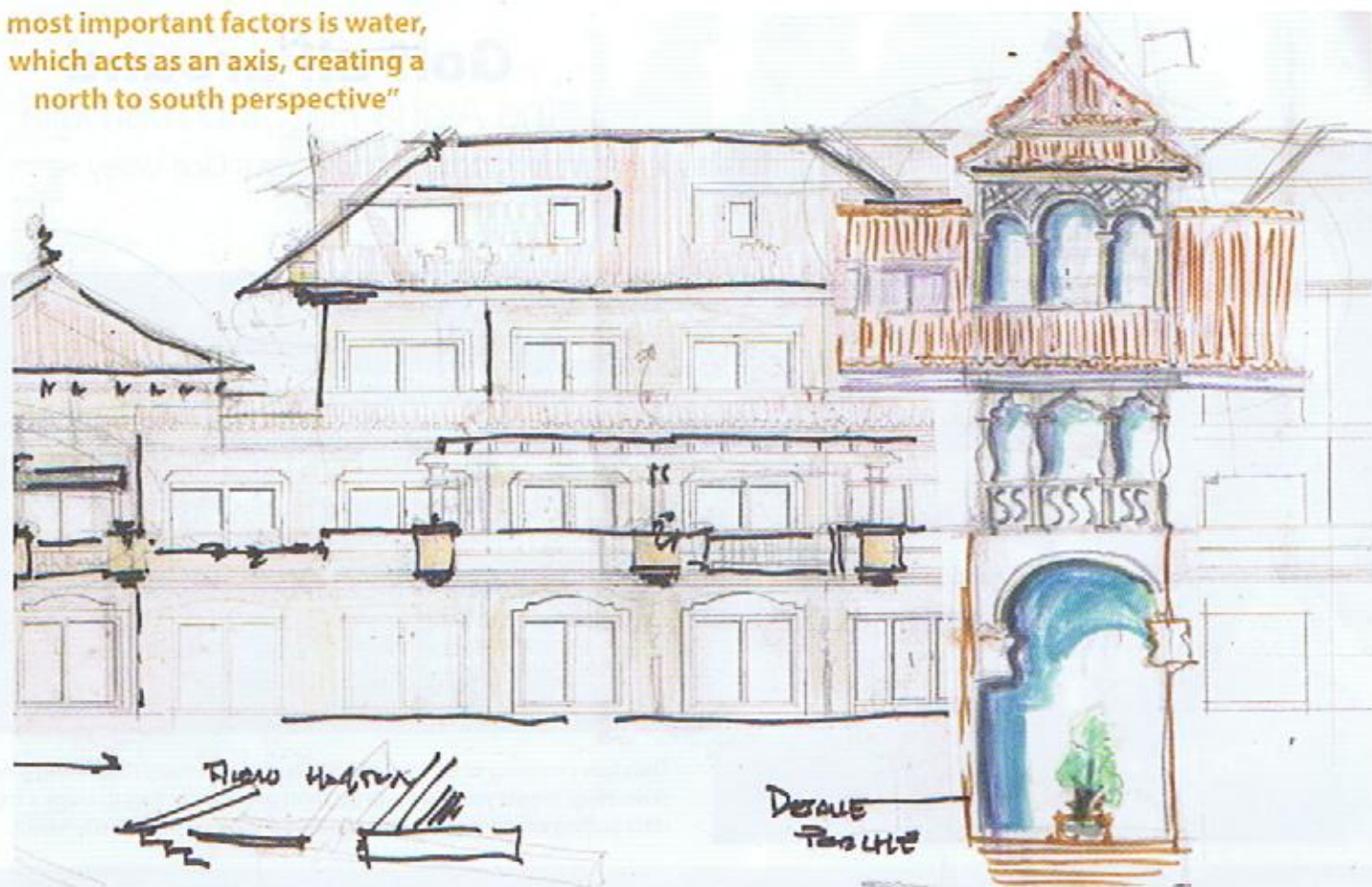
Being part of a group organisation that has a 360° involvement in the Spanish property sector means that Siesta Real Estate can access a wider range of lifestyle and property investment opportunities than its competitors and

provide a comprehensive one-stop-shop service for its clients.

The Aloha Hill Club is a Siesta Real Estate exclusive development.

www.alohahillclubmarbella.com
www.siesta-realestate.com
www.siestahomesgroup.com

"In the Aloha Hill Club one of the most important factors is water, which acts as an axis, creating a north to south perspective"



Ismael Mérida: creator of the Aloha Hill Club < architectural harmony >

In 2000, the Aloha Hill Club won an architectural prize for the "best development design in Marbella"; the imagination behind it is leading architect Ismael Mérida, of Mérida y Asociados. Founded in 1996, this Costa del Sol based practice has been responsible for projects in locations such as Lisbon, Casablanca, Tangier and the Dominican Republic. His portfolio includes private villas and housing complexes, hotels, commercial centres and sports, leisure and golf resorts.

In 2000, the Aloha Hill Club won an architectural prize for the "best development design in Marbella"; the imagination behind it is leading architect Ismael Mérida, of Mérida y Asociados. Founded in 1996, this Costa del Sol based practice has been responsible for projects in locations such as Lisbon, Casablanca, Tangier and the Dominican Republic. His portfolio includes private villas and housing complexes, hotels, commercial centres and sports, leisure and golf resorts.

If Mérida y Asociados can be said to be guided by a central philosophy, then it is the primacy of the individual requirements of each project. "We do not have a pre-set style," reveals Ismael Mérida. "For Mérida y Asociados, the project is not an excuse to unleash our egos. Our task is to create buildings that

are totally integrated with the surrounding environment, which we were able to do with the Aloha Hill Club."

Ismael is influenced by the ancient Chinese tradition of Feng Shui, which he employs in order to ensure that all aspects of the design and construction process, such as orientation, materials and organisation of available space, combine to function well within the surrounding environment.

In the Aloha Hill Club one of the most important factors is water, which acts as an axis, creating a north to south perspective. The complex is laid out on a diagonal, which was dictated by the superb southerly views, as it was important that as many apartments as possible could benefit from them. "We worked hard on the design," says Ismael. "In

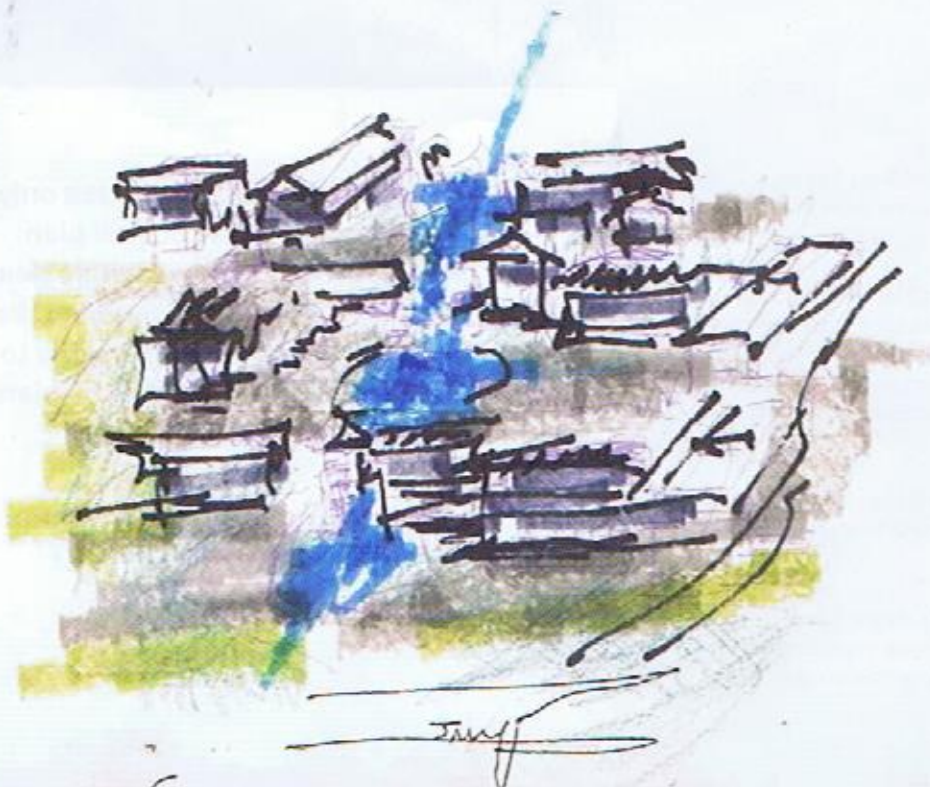
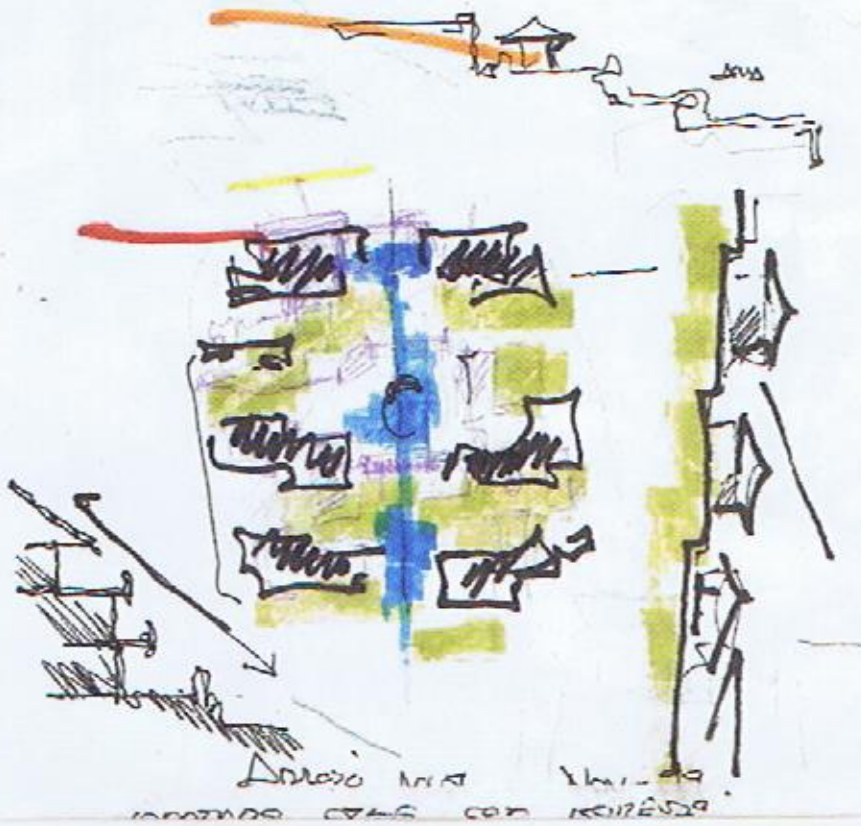
the end we decided that it was best to use a diagonal lay-out, which took some time to perfect, but in the end we managed to find a solution that suits everyone."

Ismael explains that the tenets of Feng Shui allow for the apparent disorder in nature and organic forms: "Wherever we stand, we see only one aspect of the overall plan. Perhaps it is not immediately clear to us. However, if we were to take to the skies, we would be able to deduce the order behind the plan."

The aspect of the Aloha Hill Club's design of which Ismael and the Mérida y Asociados team are most proud, is the extent to which the surrounding environment has been incorporated into the final design. "The landscape is essentially one of its pillars."

Ismael Mérida

creator of the Aloha Hill C
< architectural harmony



CAFETERIA Arroyo de la Miel Nov-99

How it all started...
This is a paper napkin from a cafe
in Arroyo de la Miel from November
1999 showing the initial drawing
of the Aloha Hill Club, by Ismael
Mérida.



The finished product is a triumph for both the architect and the Aloha Hill Club Resort SL consortium that had the vision to take on such an ambitious project. Together they have created a community of beautiful homes which not only adhere to Ismael's Feng Shui principles of design and construction, they also tick every box for design, comfort and lifestyle.





PROJECT NOTES:

- The main task is to create buildings that are totally integrated with the surrounding environment.
- By adhering to the ancient Chinese tradition of Feng Shui it is possible to ensure that all aspects of the design and construction process, such as orientation, materials and organisation of available space, combine to function well within the surrounding environment.
- One of the most important factors is water, which acts as an axis, creating a north to south perspective.
- The complex is laid out on a diagonal as dictated by the southerly views, as it was important that the maximum number of apartments could benefit from them.

“Wherever we stand, we see only one aspect of the overall plan. Perhaps it is not immediately clear to us. However, if we were to take to the skies, we would be able to deduce the order behind the plan”